

## IMPORTANT

Failure to follow instructions carefully may cause damage. Save instructions or visit [command.com](http://command.com)

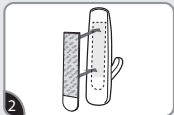


17200CL  
[command.com](http://command.com)

## APPLY



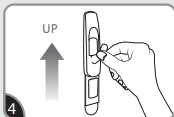
1 Clean surface with isopropyl rubbing alcohol\*. Do not use household cleaners.



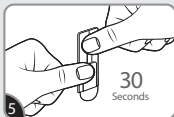
2 Remove red liner. Press adhesive to hook.



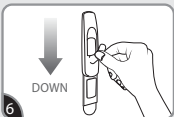
3 Remove black liner. Press to wall for 10 seconds.



4 To ensure adhesive hold, slide hook up and off.



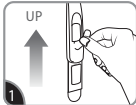
5 Press base firmly for 30 seconds.



6 Slide hook back on. Wait **1 HOUR** before use.

\*Isopropyl rubbing alcohol may be found in most pharmacies and/or hardware stores.

## REMOVE



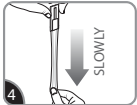
1 Slide hook up and off.



2 Gently hold mounting base in place.



3 Never pull the strip towards you! Always pull straight down.



4 Stretch the strip slowly against the wall at least 38 cm to release.

**EACH STRIP HOLDS UP TO: Small = 225 g – 450 g, Medium = 1.3 KG, Large = 2.2 KG**

### ▲ CAUTION:

Do not hang over beds or use on wallpaper. May not adhere well to vinyl surfaces.

Do not hang valuable or irreplaceable items, clocks or framed pictures.

Use only one hook per item hung. For indoor use only. Apply to surfaces between 10°- 40°C. Wait a minimum of 28 days after painting to apply.

Not intended for picture hanging. Instead use Command™ Picture Hanging Strips, Sawtooth or Wire-Backed Hangers.

Strips made in Singapore.

3M and Command are trademarks of 3M.

© 3M 2016. All rights reserved.

34-8717-3569-1  
[command.com](http://command.com)

The following statements do not apply to products distributed in Australia and New Zealand. Consumers must rely on their statutory rights.

### WARRANTY & LIABILITY:

This product will be free from defects in material and manufacture. Please read the instructions carefully. 3M will not be liable for any loss or damage caused by incorrect use, application or removal of the product. If this product is found to be defective, your remedy shall be, at 3M's option, replacement of the product or refund of the purchase price. To the extent permitted by law, 3M will not be liable for any other loss or damage arising from the use of this product.

### Dist. By:

3M, Construction and Home Improvement Markets Division

3M Australia Pty Limited  
Bldg A, 1 Rivett Road  
North Ryde, NSW 2113  
PH: 1800 025 725

3M New Zealand Ltd  
94 Apollo Drive, Rosedale,  
Auckland 0632  
PH: 0800 436 435

3M Technologies (S) Pte Ltd.  
1 Yishun Avenue 7,  
Singapore 768923  
PH: (65) 6450-8888



Please dispose packaging thoughtfully!

